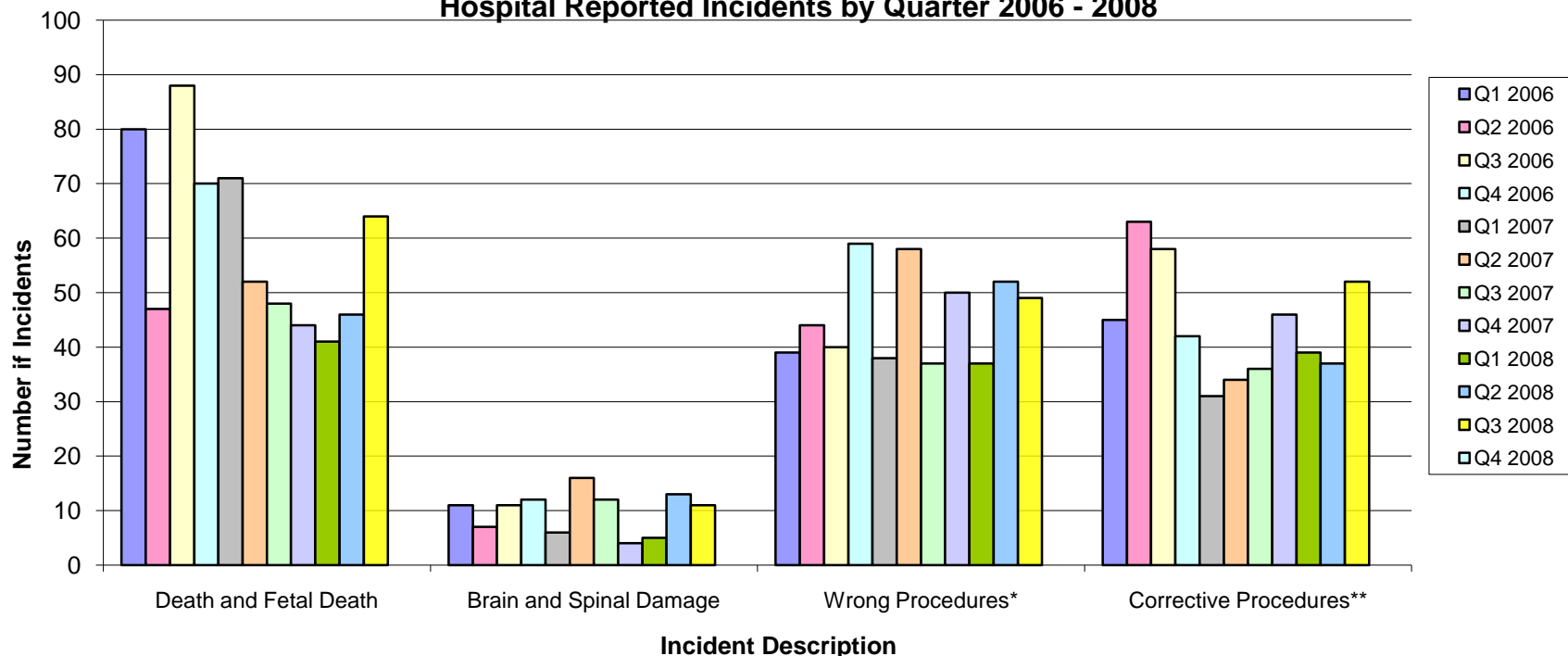


**Agency for Health Care Administration  
Florida Center for Health Information and Policy Analysis  
Risk Management Patient Safety Program**

**Hospital Reported Incidents by Quarter 2006 - 2008**



	Death and Fetal Death	Brain and Spinal Damage	Wrong Procedures*	Corrective Procedures**	Average
Q1 2006	80	11	39	45	43.75
Q2 2006	47	7	44	63	40.25
Q3 2006	88	11	40	58	49.25
Q4 2006	70	12	59	42	45.75
Q1 2007	71	6	38	31	36.5
Q2 2007	52	16	58	34	40
Q3 2007	48	12	37	36	33.25
Q4 2007	44	4	50	46	36
Q1 2008	41	5	37	39	30.5
Q2 2008	46	13	52	37	37
Q3 2008	64	11	49	52	44
Q4 2008	45	11	39	38	33
<b>Average</b>	<b>59</b>	<b>10</b>	<b>46</b>	<b>44</b>	<b>40</b>

\*Wrong Procedures include the statutorily defined: Wrong Site, Wrong Patient, Wrong Procedure as well as Surgical Procedures unrelated to the Patient's admitting diagnosis.

\*\*Corrective Procedures include the statutorily defined: Surgical Repair, as well as Surgical Procedure to remove foreign objects.