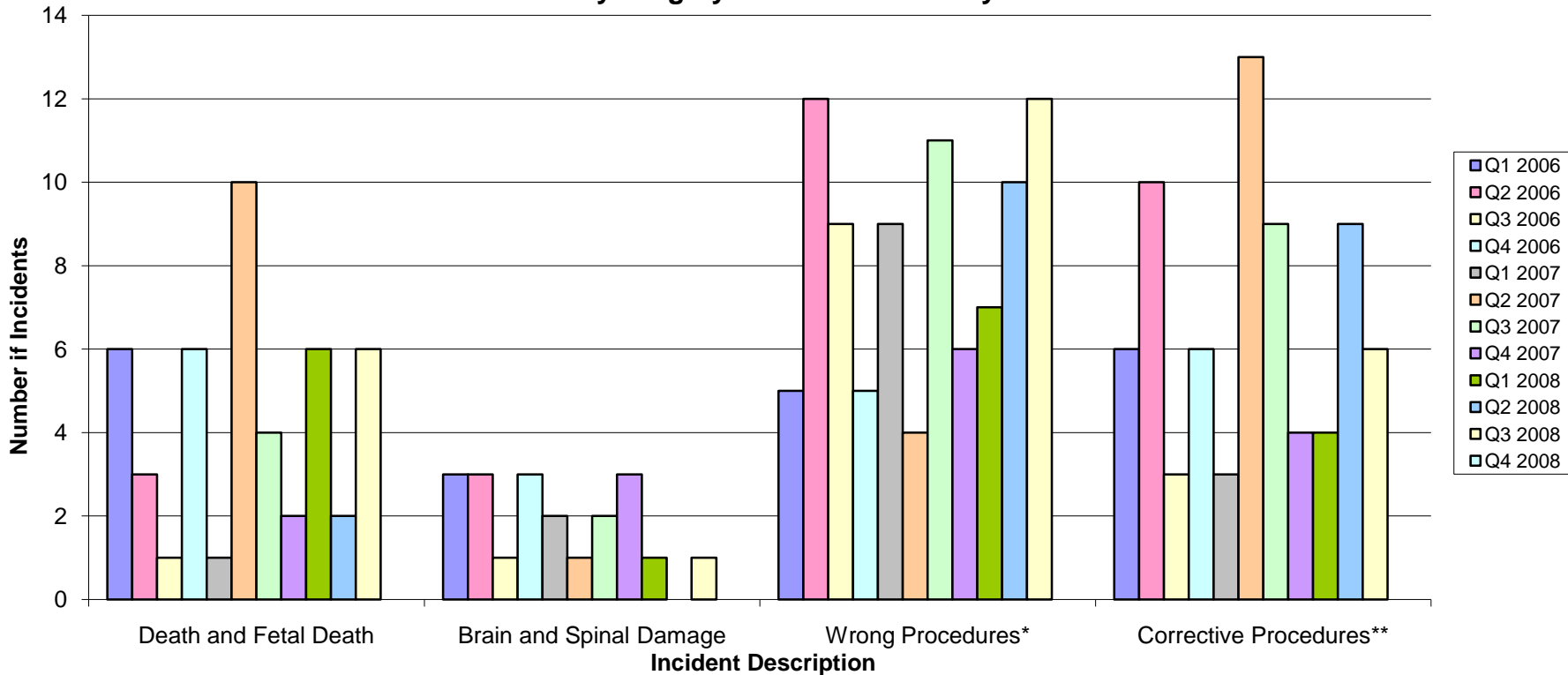


**Agency for Health Care Administration
Florida Center for Health Information and Policy Analysis
Risk Management Patient Safety Program**

Ambulatory Surgery Center Incidents by Quarter 2006 - 2008



	Death and Fetal Death	Brain and Spinal Damage	Wrong Procedures*	Corrective Procedures**	
Q1 2006	6	3	5	6	5
Q2 2006	3	3	12	10	7
Q3 2006	1	1	9	3	3.5
Q4 2006	6	3	5	6	5
Q1 2007	1	2	9	3	3.75
Q2 2007	10	1	4	13	7
Q3 2007	4	2	11	9	6.5
Q4 2007	2	3	6	4	3.75
Q1 2008	6	1	7	4	4.5
Q2 2008	2	0	10	9	5.25
Q3 2008	6	1	12	6	6.25
Q4 2008	6	2	7	8	5.75
Average	4	2	8	7	

*"Wrong Procedures" include the statutorily defined: Wrong Site, Wrong Patient, Wrong Procedure as well as Surgical Procedures unrelated to the Patient's admitting diagnosis.

**Corrective Procedures include the statutorily defined: Surgical Repair, as well as Surgical Procedure to remove foreign objects.